


FISHWAY STATUS REPORT

Date: 5/31/2014
 Inspection Period: 5/25 thru 5/31/2014

All JD Fishways are inspected twice per day during fish season, March. 1 - Nov. 31
 Frequent monitoring of the PLC displays in SMF Fisheries Office as necessary.



**US Army Corps
of Engineers**
Portland District

JOHN DAY DAM

JD/WC Project-Fisheries
 P.O. Box 823
 Rufus, Oregon 97050
 Phone: 541-506-7860

John Day Dam	Inspections	Criteria	Total Number of Inspections: 14	Temperature: 58 F
	Out of Criteria	Limit		Secchi: 3.0 Ft.
NORTH FISHWAY			In regular service. Five AWS pumps available since 4/11.	
Exit differential	0	≤ 0.5'		
Exit Control weirs	0	High setting	High setting is normal for JDN	
Count station differential	0	≤ 0.3'		
Weir crest depth (DS gauge)	0	1.3' ± 0.1'	Temporary 1.3' for shad passage since 5/22.	
Entrance differential	0	1.0' - 2.0'	AVG 1.5	
SOUTH FISHWAY			In regular service with all three AWS turbines.	
Exit differential	0	≤ 0.5'		
Exit Control weirs	0	MID setting	MID is normal for JDS	
Count station differential	0	≤ 0.3'		
Weir crest depth (US gauge)	0	1.3' ± 0.1'	Temporary 1.3' for shad passage since 5/22.	
South entrance differential	0	1.0' - 2.0'	AVG 1.5	
Entrance weir SE1	0	depth (≥ 8')	AVG 8.3	
Collection channel velocity	0	1.5 - 4 fps	AVG 3.16	
Bay 1 differential	0	1.0' - 2.0'	AVG 1.7	
N. Entrance PH(Bay 19)differential	0	1.0' - 2.0'	AVG 1.8	
Entrance weir NE1	0	depth (≥ 8')	AVG 9.0	
Entrance weir NE2	0	depth (≥ 8')	AVG 9.0	
JUVENILE PASSAGE			JBS/SMF in regular service since 3/30.	
Forebay/bypass conduit differential	0	4.0' - 5.0'	AVG 4.6	
Submersible traveling screens	0	visual inspect	Next underwater camera inspection of STSs scheduled for week of 6/21.	
Turbine trashrack drawdown	0	<1.5', wkly	JD Structural raking of MU trashracks occurs the last week of each month.	
Vert barrier screen drawdown	0	<1.5', wkly	JD Fisheries crew performs frequent gate wells' drawdowns depending on river debris.	
Spill volume	0	30/40 %	Per the PNNL experimental block design, changing every two days.	
Spill pattern	0	per FPP		
Turbine Unit Priority	0	per FPP		
Turbine 1% Efficiency	0	per FPP		

SMOLT MONITORING FACILITY

Operation: SMF is in sampling mode since 3/31 AM. Daily 24 hrs smolt sampling by PSMFC crew since 4/1.

JD Fisheries works regular 24/7 swing shift schedule as required by FPP; it will continue this until the end of sampling season on 9/15.

Debris: Moderate to heavy; primarily tumbleweeds with some sticks, branches, and wooden debris.

Maintenance: None.

Research:

Battelle's spring component completed on 5/28 and their crew is in recess. The summer collection starts on 6/9 and will continue for approx. one month.

Fallbacks: AVG: 35 MAX: 43 MIN: 26

OTHER ISSUES:

JOHN DAY

BIRDS : see the Avian Numbers tab. We report all species and locations, but in reality only gulls in the tailrace BRZ are relevant at JD.

USDA hazing from a boat started on 4/17; one 8 hrs shift, 7 days a week will continue through the end of July. A slight increase in numbers of gulls PM after hazing stops, but almost all are flying downstream of the avian tailrace BRZ grid. Gull predation at JD continues to be estimated as minimal.

124 out of 125 total primary lines are intact/ in place.

Operations:

JD North Fishway is in regular service and meeting the FPP criteria.

JD South Fishway in regular service and meeting the FPP criteria.

Maintenance:

JD North AWS pumps - five out of total six are available for service since 4/11. AWS pump # 4 continues in OOS status due to its lower bearing issues.

JD Engineering/contractor continue with its repairs.

Calibration: 5/30/2014 All sensors were within the criteria of 0.3' .

Gatewell Drawdown: 5/25/2014 and 5/28/2014 No measurements above 1.0' on 5/25 and four above 1.0 on 5/28.

Research:

JD Fisheries coordinating with research groups for the upcoming 2014 studies:

Tribal collection of adult lamprey at JD CS is slated to commence in early July.

PSMFC/WDFW dam angling from the JD PH tailrace deck for pikeminnow underway.

U of I Testing of JD North LPS (Lamprey Passage System) preparing for their season's work starting in July 2014.

PNNL's Spring Component completed at JD SMF on 5/28 (last day of collecting juveniles for tagging.) Their crew is in recess.

PNNL JD Summer Juvenile Salmonids passage survival study will start on 6/9 (first day of collection .)

2014 Adult Salmonids counting by Normandeau Ass. continues through October 31 as required by FPP.

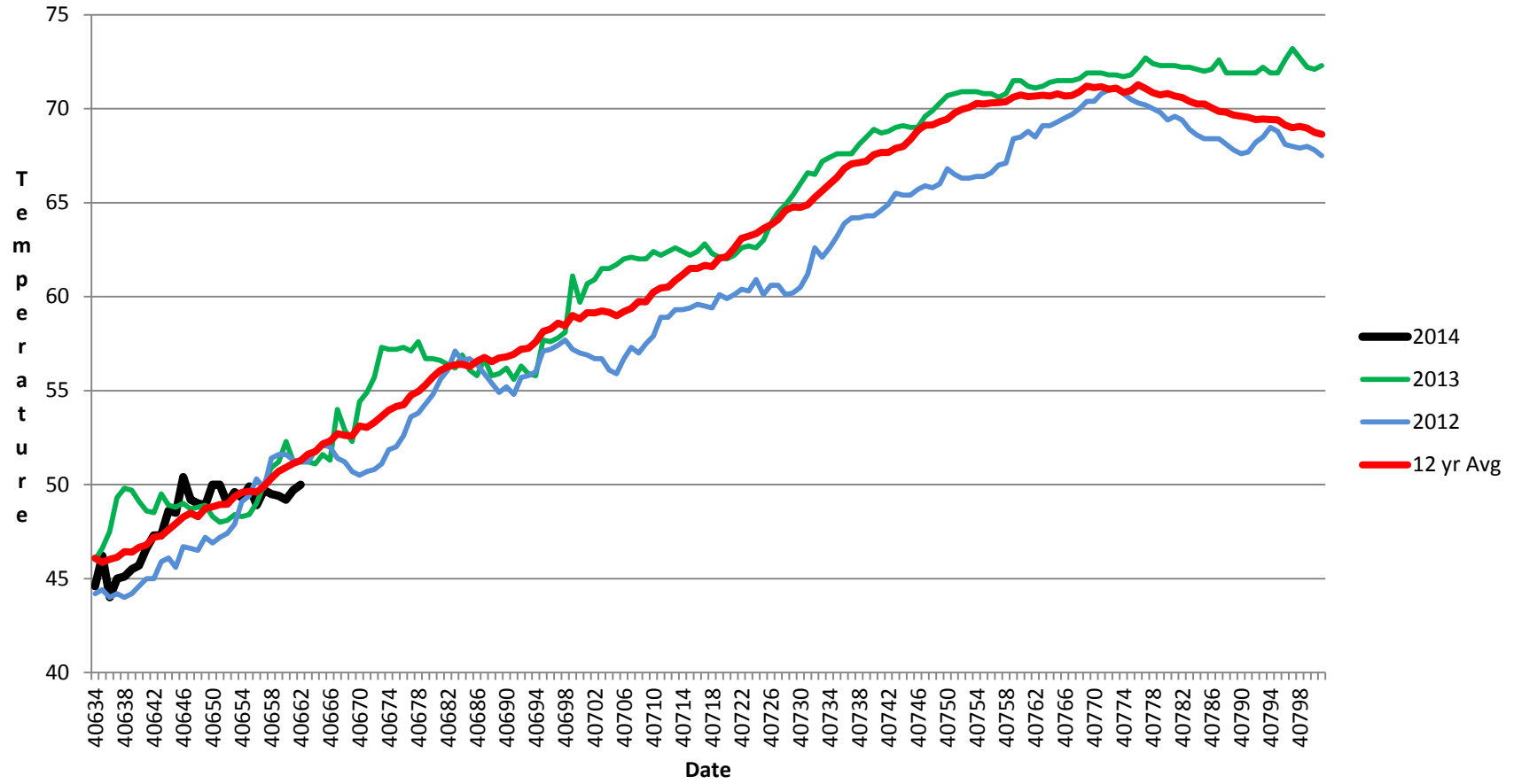
Adult Salmonids Radio telemetry evaluations are ongoing at both JD adult fishway. University of Idaho crew is in charge of detecting of all adult salmonids, which were tagged and released at Bonneville Dam.

Glen A. Smith PE

Date: ___ 3-Jun-14

OPM John Day/Willow Creek Project

JDA SMF Water Temp



JDA COLLECTION CHANNEL VELOCITY

Date 26-May-14
By: pkp

Bay(s)	Time	Sec.	Velocity (f/s)
0-2	01:27.0	87	2.07
2 - 4	0:02:19	139	3.46
4 - 6	0:03:17	197	3.10
6 - 8	0:04:15	255	3.10
8 - 10	0:05:14	314	3.05
10 - 12	0:06:12	372	3.10
12 - 14	0:07:08	428	3.21
14 - 16	0:08:05	485	3.16
16 - 18	0:08:48	528	4.19

3.16

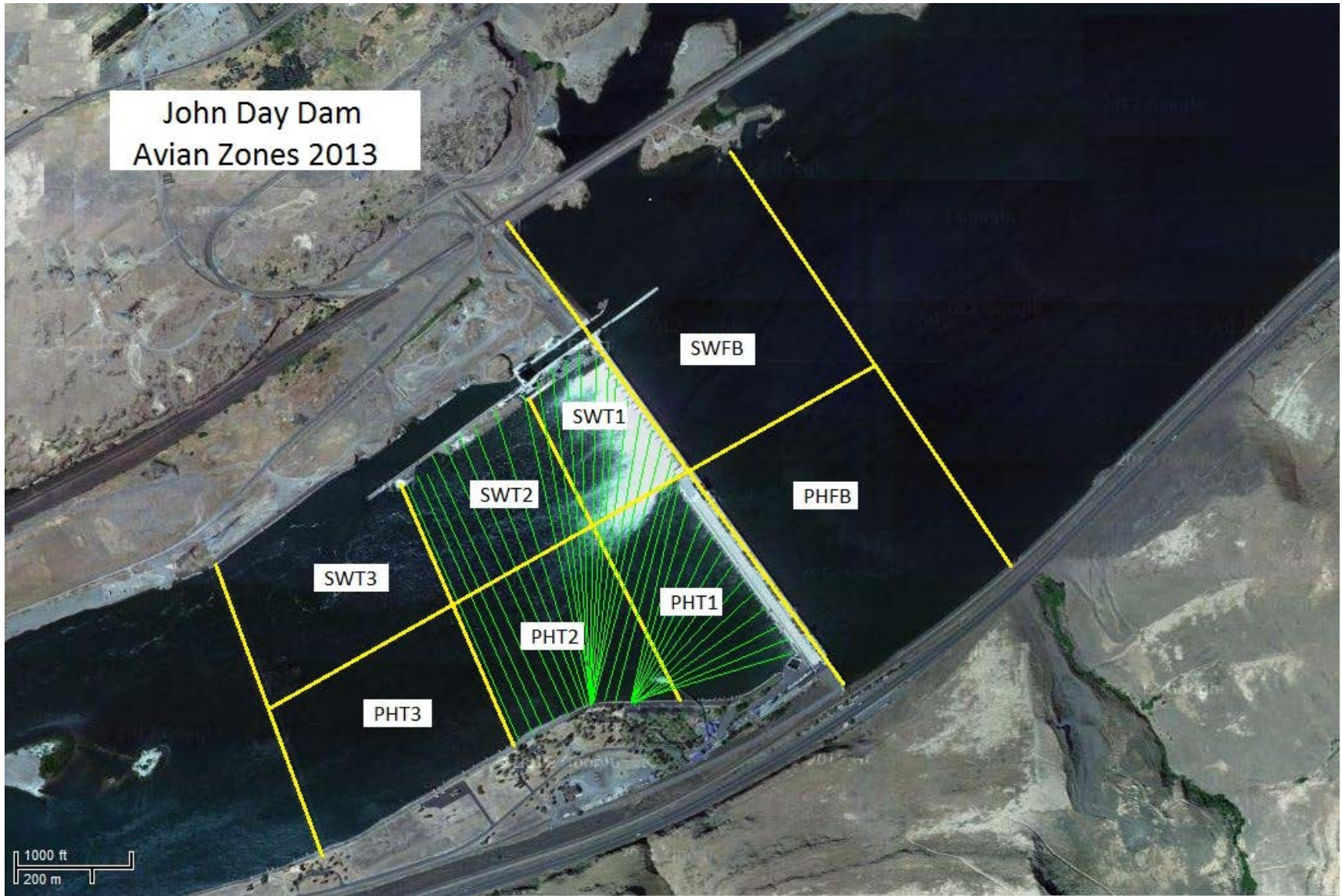
John Day	29-May-14	2	14:00	PH1	0	0	0	0	0	0	0	0
John Day	29-May-14	2	14:00	PH2	0	0	0	0	0	0	0	0
John Day	29-May-14	2	14:00	PH3	4	0	0	0	0	0	0	0
John Day	29-May-14	2	14:00	SW1	0	0	0	0	0	0	0	0
John Day	29-May-14	2	14:00	SW2	0	0	0	0	0	0	0	0
John Day	29-May-14	2	14:00	SW3	2	0	0	0	0	0	0	0
John Day	30-May-14	1	10:00	PHFB	0	0	0	0	0	0	0	0
John Day	30-May-14	1	10:00	SWFB	0	0	0	0	0	0	0	0
John Day	30-May-14	1	10:00	PH1	0	0	0	0	0	0	0	0
John Day	30-May-14	1	10:00	PH2	6	0	0	0	0	0	0	0
John Day	30-May-14	1	10:00	PH3	4	0	0	0	0	0	0	0
John Day	30-May-14	1	10:00	SW1	0	0	0	0	0	0	0	0
John Day	30-May-14	1	10:00	SW2	0	0	0	0	0	0	0	0
John Day	30-May-14	1	10:00	SW3	2	0	0	0	0	0	0	0
John Day	30-May-14	2	15:00	PHFB	3	0	0	0	0	0	0	0
John Day	30-May-14	2	15:00	SWFB	0	0	0	0	0	0	0	0
John Day	30-May-14	2	15:00	PH1	0	0	0	0	0	0	0	0
John Day	30-May-14	2	15:00	PH2	2	0	0	0	0	0	0	0
John Day	30-May-14	2	15:00	PH3	16	0	0	0	0	0	0	0
John Day	30-May-14	2	15:00	SW1	0	0	0	0	0	0	0	0
John Day	30-May-14	2	15:00	SW2	0	0	0	0	0	0	0	0
John Day	30-May-14	2	15:00	SW3	4	0	0	0	0	0	0	0
John Day	31-May-14	1	9:00	PHFB	1	0	0	0	0	0	0	0
John Day	31-May-14	1	9:00	SWFB	0	0	0	0	0	0	0	0
John Day	31-May-14	1	9:00	PH1	0	0	0	0	0	0	0	0
John Day	31-May-14	1	9:00	PH2	3	0	0	0	0	0	0	0
John Day	31-May-14	1	9:00	PH3	2	0	0	0	0	0	0	0
John Day	31-May-14	1	9:00	SW1	0	0	0	0	0	0	0	0
John Day	31-May-14	1	9:00	SW2	0	0	0	0	0	0	0	0
John Day	31-May-14	1	9:00	SW3	1	0	0	0	0	0	0	0
John Day	31-May-14	2	14:30	PHFB	2	0	0	0	0	0	0	0
John Day	31-May-14	2	14:30	SWFB	0	0	0	0	0	0	0	0
John Day	31-May-14	2	14:30	PH1	0	0	0	0	0	0	0	0
John Day	31-May-14	2	14:30	PH2	5	0	0	0	0	0	0	0
John Day	31-May-14	2	14:30	PH3	7	0	0	0	0	0	0	0
John Day	31-May-14	2	14:30	SW1	0	0	0	0	0	0	0	0
John Day	31-May-14	2	14:30	SW2	0	0	0	0	0	0	0	0
John Day	31-May-14	2	14:30	SW3	3	0	0	0	0	0	0	0

Grebe		Total birds in zone	Observer	Notes
F	NF			
0	30	30	Eric	
0	0	0	Eric	
0	0	0	Eric	
0	0	3	Eric	
0	0	2	Eric	
0	0	0	Eric	
0	0	3	Eric	
0	0	37	Eric	
21	0	21	Eric	
0	0	0	Eric	
0	0	0	Eric	
0	0	7	Eric	
0	0	11	Eric	
0	0	0	Eric	
0	0	0	Eric	
0	0	47	Eric	
35	0	35	Eric	
0	0	0	Eric	
0	0	0	Eric	
0	0	6	Eric	
0	0	5	Eric	
0	0	0	Eric	
0	0	3	Eric	
0	0	37	Eric	
27	0	27	Eric	
0	0	0	Eric	
0	0	0	Eric	
0	0	0	Eric	
0	0	2	Eric	
0	0	0	Eric	
0	0	0	Eric	
0	0	67	Eric	
27	0	30	Eric	
0	0	0	Eric	

0	0	0	Eric
0	0	0	Eric
0	0	4	Eric
0	0	0	Eric
0	0	4	Eric
0	0	33	Eric
0	0	0	Eric
0	0	0	Eric
0	0	0	Eric
0	0	0	Eric
0	0	0	Eric
0	0	0	Eric
0	0	0	Eric
0	0	0	Eric
0	0	0	Eric
0	0	0	Eric
0	36	37	Dale
0	0	0	Dale
0	0	0	Dale
0	0	0	Dale
0	0	2	Dale
0	0	0	Dale
0	0	0	Dale
0	0	5	Dale
0	34	41	Dale
0	0	0	Dale
0	0	0	Dale
0	0	0	Dale
0	0	2	Dale
0	0	0	Dale
0	0	0	Dale
0	0	4	Dale
0	44	46	Dale
0	0	0	Dale
0	0	4	Dale
0	0	5	Dale
0	0	4	Dale
0	0	0	Dale
0	0	0	Dale
0	0	0	Dale
0	0	9	Dale
0	42	42	Dale
0	0	0	Dale

0	0	0	Dale
0	0	0	Dale
0	0	4	Dale
0	0	0	Dale
0	0	0	Dale
0	0	2	Dale
0	48	48	Dale
0	0	0	Dale
0	0	0	Dale
0	0	6	Dale
0	0	4	Dale
0	0	0	Dale
0	0	0	Dale
0	0	2	Dale
0	40	43	Dale
0	0	0	Dale
0	0	0	Dale
0	0	2	Dale
0	0	16	Dale
0	0	0	Dale
0	0	0	Dale
0	0	4	Dale
0	33	34	Dale
0	0	0	Dale
0	0	0	Dale
0	0	3	Dale
0	0	2	Dale
0	0	0	Dale
0	0	0	Dale
0	0	1	Dale
0	43	45	Dale
0	0	0	Dale
0	0	0	Dale
0	0	5	Dale
0	0	7	Dale
0	0	0	Dale
0	0	0	Dale
0	0	3	Dale

John Day Dam
Avian Zones 2013



John Day:

	Temp:	Secchi:	Fallbacks
Sun	58	3.0	38
Mon	58	3.0	26
Tues	58	3.0	29
Wed	58	3.0	40
Thur	58	3.0	43
Fri	58	3.0	38
Sat	58	3.0	29
AVG:	58	AVG: 3.0	AVG 35
			MAX 43
			MIN 26

	NE1	NE2	S.Ent	SE1	N.Ent	JBS Diff	Bay1	Bay19
Sun	9.3	9.2	1.4	8.3	1.5	4.6	1.7	1.7
Sun	9.4	9.4	1.5	8.4	1.5	4.6	1.8	1.6
Mon	9.0	9.0	1.4	8.1	1.5	4.6	1.9	2.0
Mon	9.5	9.5	1.4	8.5	1.5	4.5	1.7	1.5
Tues	9.3	9.3	1.4	8.5	1.5	4.5	1.6	1.8
Tues	9.2	9.3	1.6	8.3	1.5	4.6	1.8	1.8
Wed	8.7	8.8	1.6	8.0	1.6	4.6	1.9	2.0
Wed	9.3	9.4	1.4	8.2	1.5	4.5	1.7	1.5
Thur	8.6	8.6	1.5	8.0	1.3	4.6	1.8	2.0
Thur	8.6	8.5	1.5	8.0	1.4	4.5	1.8	1.9
Fri	8.7	8.7	1.4	8.4	1.7	4.5	1.7	2.0
Fri	9.2	9.2	1.2	9.0	1.3	4.6	1.5	2.0
Sat	8.3	8.3	1.6	8.1	1.5	4.6	1.8	2.0
Sat	8.6	8.6	1.4	8.6	1.5	4.6	1.7	2.0
AVG:	9.0	9.0	1.5	8.3	1.5	4.6	1.7	1.8